

# Ombudsman (June Presentation Final)

File created on: 6/6/2023 6:34:31 AM

Welcome

Background Information

Disparity through the child protection system continuum

An accepted report of abuse begins a families path through the child protection system.

Children are surveilled by a variety ..

# Mandatory Reporter Taskforce | Colorado

The Office of Colorado's Child Protection Ombudsman (CPO) is committed to ensuring the state's child protection system consistently provides high quality services to every child, family and community in Colorado

**Data prepared by Casey Family Programs, Data Advocacy**

Data throughout presentation derived from state submitted Adoption and Foster Care Analysis and Reporting System (AFCARS) and National Child Abuse and Neglect Data System (NCANDS) child files.

## AFCARS: Adoption and Foster Care Analysis and Reporting System

AFCARS was established to provide data that would assist in policy development and program management. Data can be used by policymakers at the federal, Tribal, and state levels to assess how many children are in foster care, reasons why they enter, how they exit, and to develop strategies to prevent their unnecessary placement into foster care.

## NCANDS: National Child Abuse and Neglect Data System

Voluntary data collection system that gathers information from all 50 states, DC, and PR about reports of child abuse and neglect. NCANDS established in response to the Child Abuse Prevention and Treatment Act of 1988. The data are used to examine trends in child abuse and neglect across the country and findings are published in the Child Maltreatment Reports.

## Screening Decisions

NCANDS only includes children that have been accepted for an investigation/assessment. According to the most recent Child Maltreatment Report, Colorado screens out 2 out of every 3 reports. Casey is not able to report on who reports nor outcome of these calls.

## Race/Multi-Racial Children

When reviewing race/ethnic disaggregated data slides, consideration of the racial make-up of multi-racial children can be helpful. In Colorado, of the approximately 200 multi-racial children in care 80% are described as Black/African American and White.

Best practice for reporting race would include self-disclosure of child. How data gets input into the case management system may vary.

Welcome

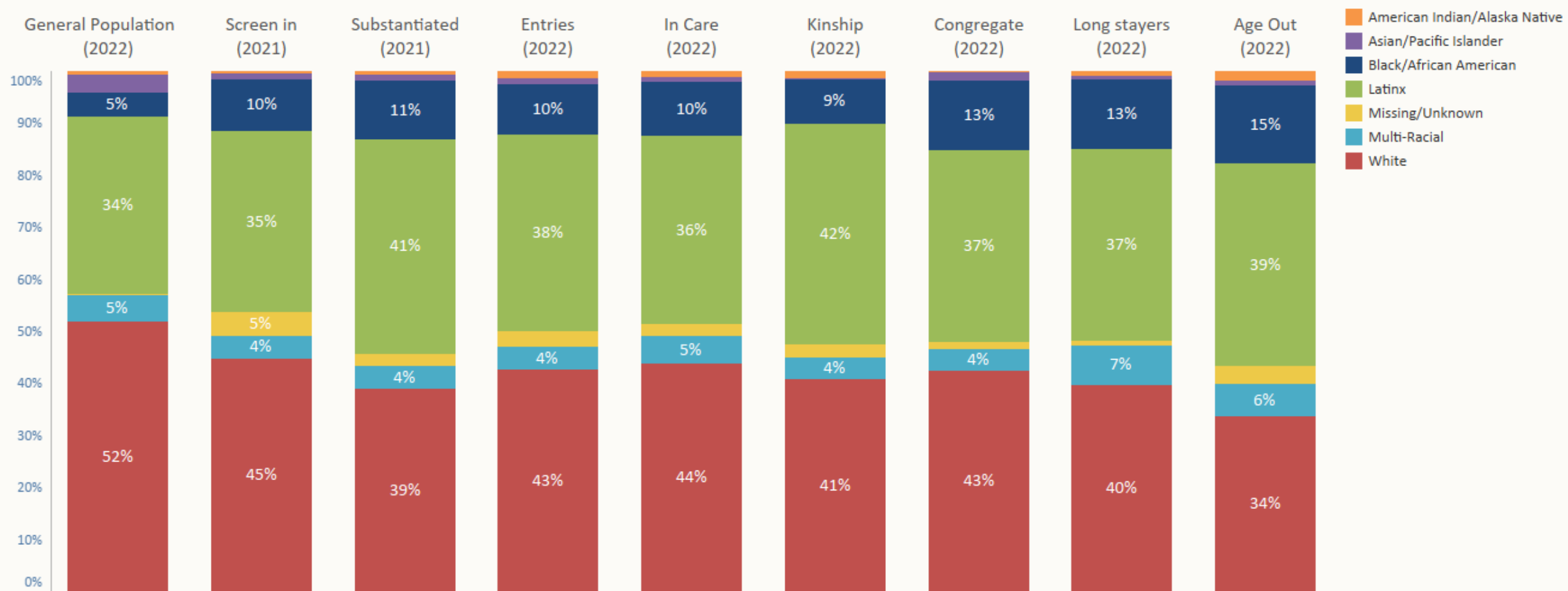
Background Information

Disparity through the child protection system continuum

An accepted report of abuse begins a families path through the child protection system.

Children are surveilled by a variety of mandated and non mandated reporters.

a **decision point analysis** can provide a helpful picture for understanding disparity by visually tuning-in to over- and under- represented groups relative to their proportion in the base population.



Background Information

Disparity through the child protection system continuum

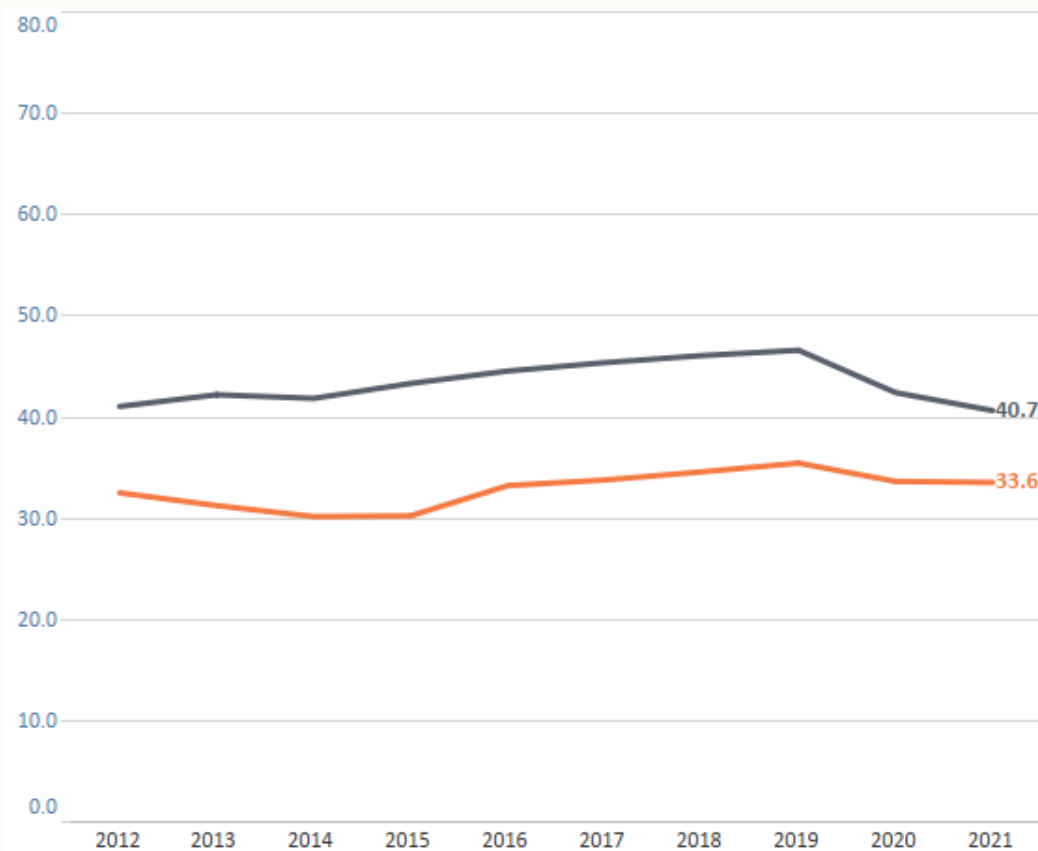
An accepted report of abuse begins a families path through the child protection system.

Children are surveilled by a variety of mandated and non mandated reporters.

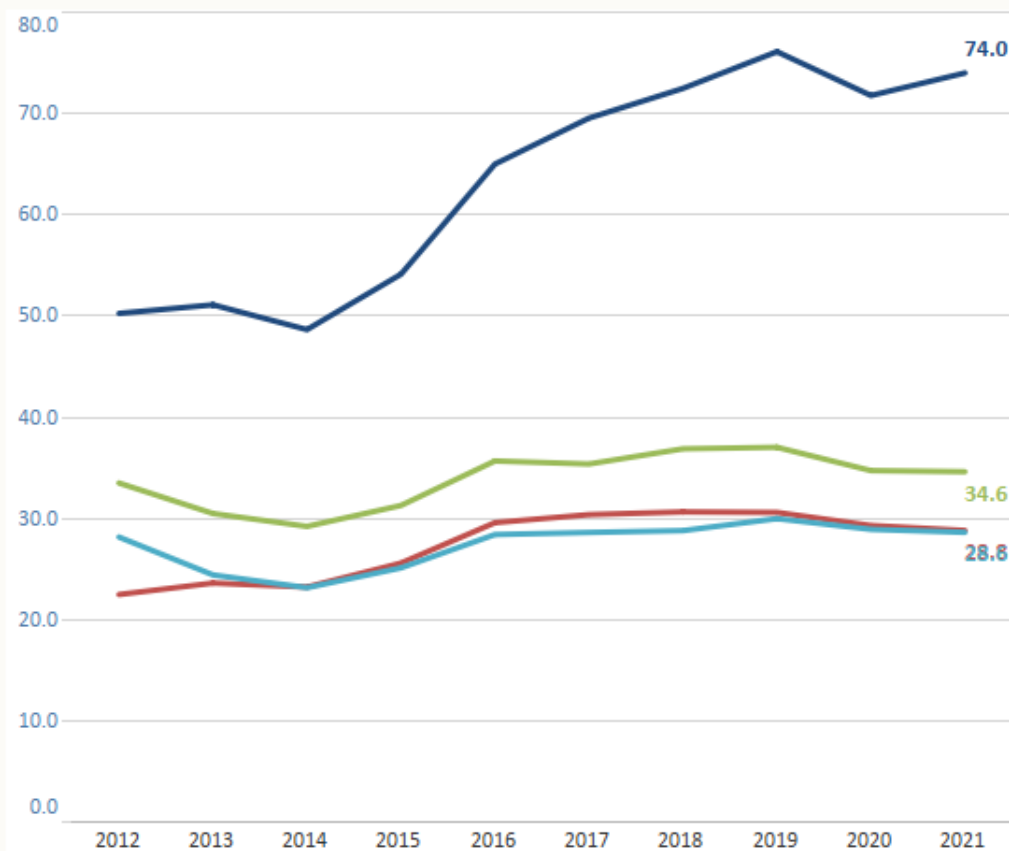
Although 33 children out of 1,000 in the general population are investigated for abuse/neglect, over 80% are not substantiated. How ..

Rate of children (ages < 18) screened in for an investigation or assessment during the federal fiscal year.  
(unique count of children < age 18; per 1,000 children in population)

Colorado/National



Percent of screened in children by race/ethnic group



- Black/African American
- Latinx
- Multi-Racial
- White

Disparity through the child protection system continuum

An accepted report of abuse begins a families path through the child protection system.

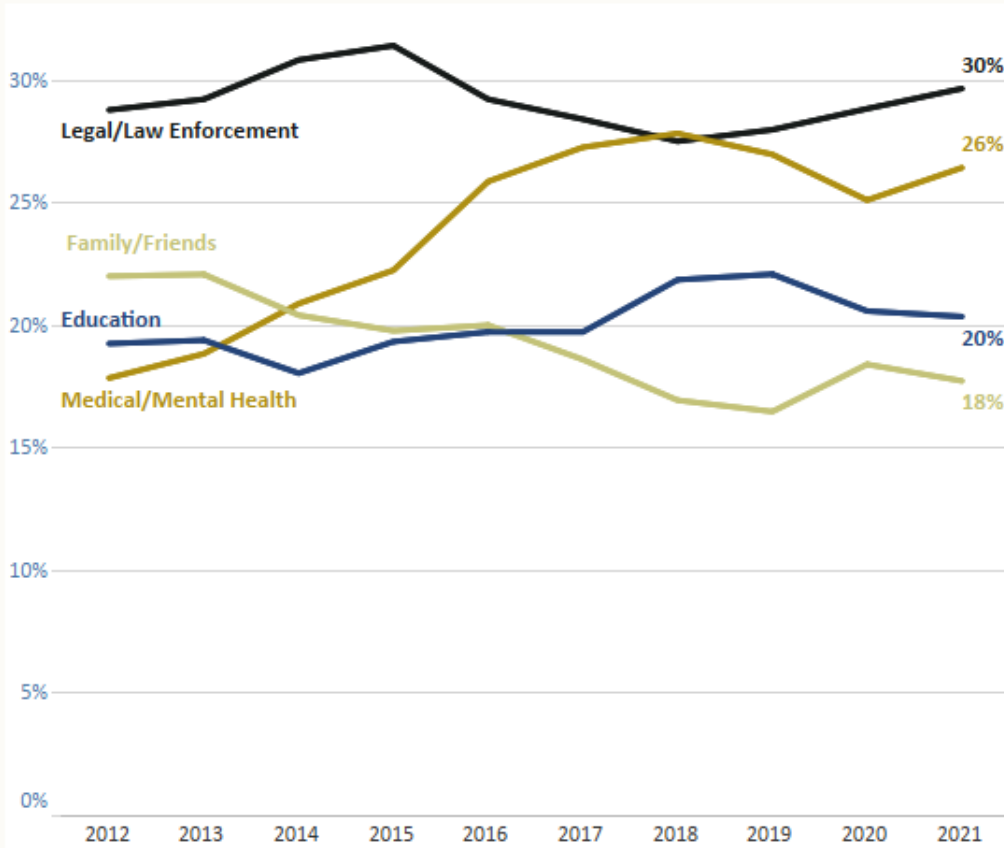
Children are surveilled by a variety of mandated and non mandated reporters.

Although 33 children out of 1,000 in the general population are investigated for abuse/neglect, over 80% are not substantiated. How does racial equity fare among report disposition?

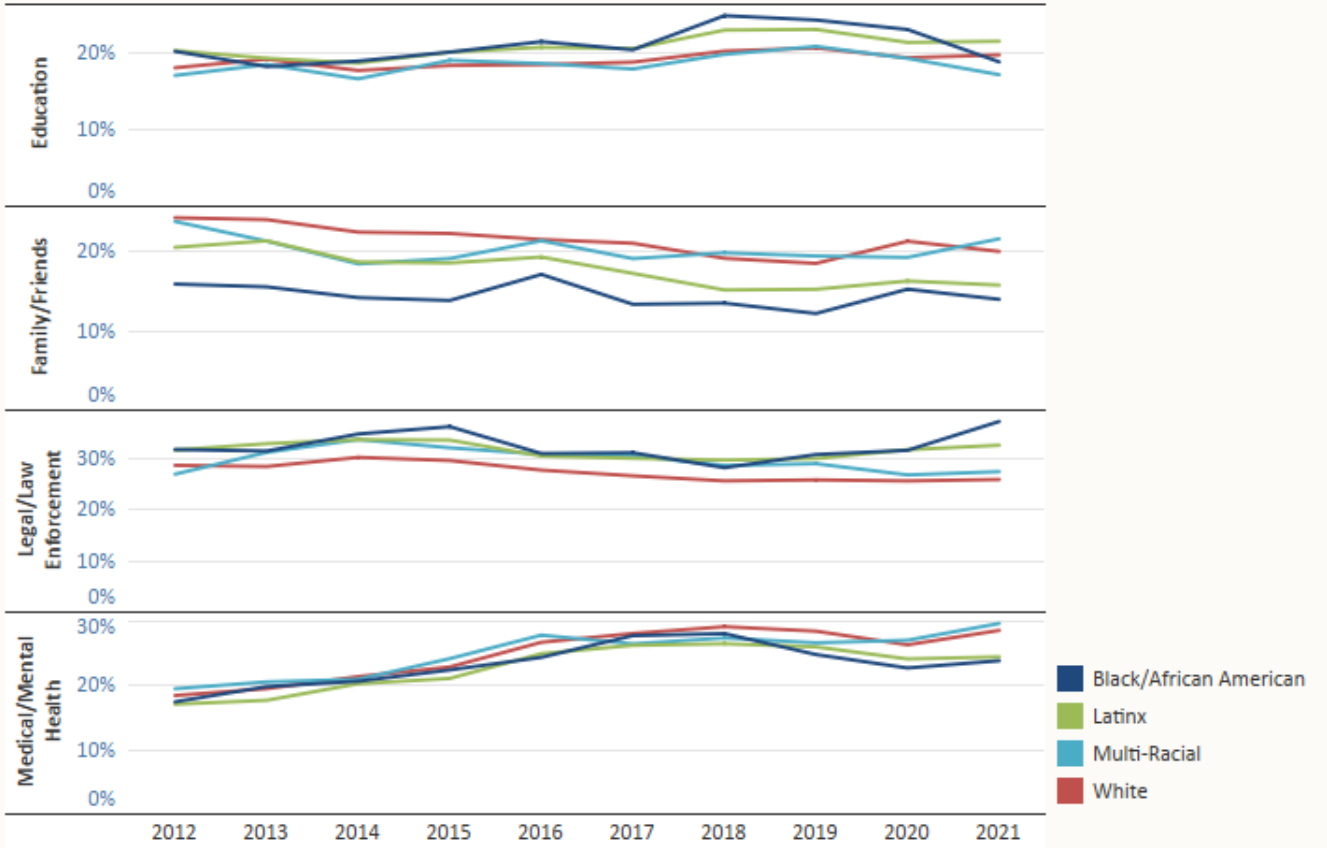
During federal fiscal year 2021, were there differences among reporters in whether an investigation was substantiated?

Percent of children (ages < 18) screened in for an investigation or assessment during the federal fiscal year. (unique count of children < age 18; top 4 reporter sources shown)

Percent children by reporter



Percent children by race/ethnic group (note: axis ranges vary across graphs)



An accepted report of abuse begins a families path through the child protection system.

Children are surveilled by a variety of mandated and non mandated reporters.

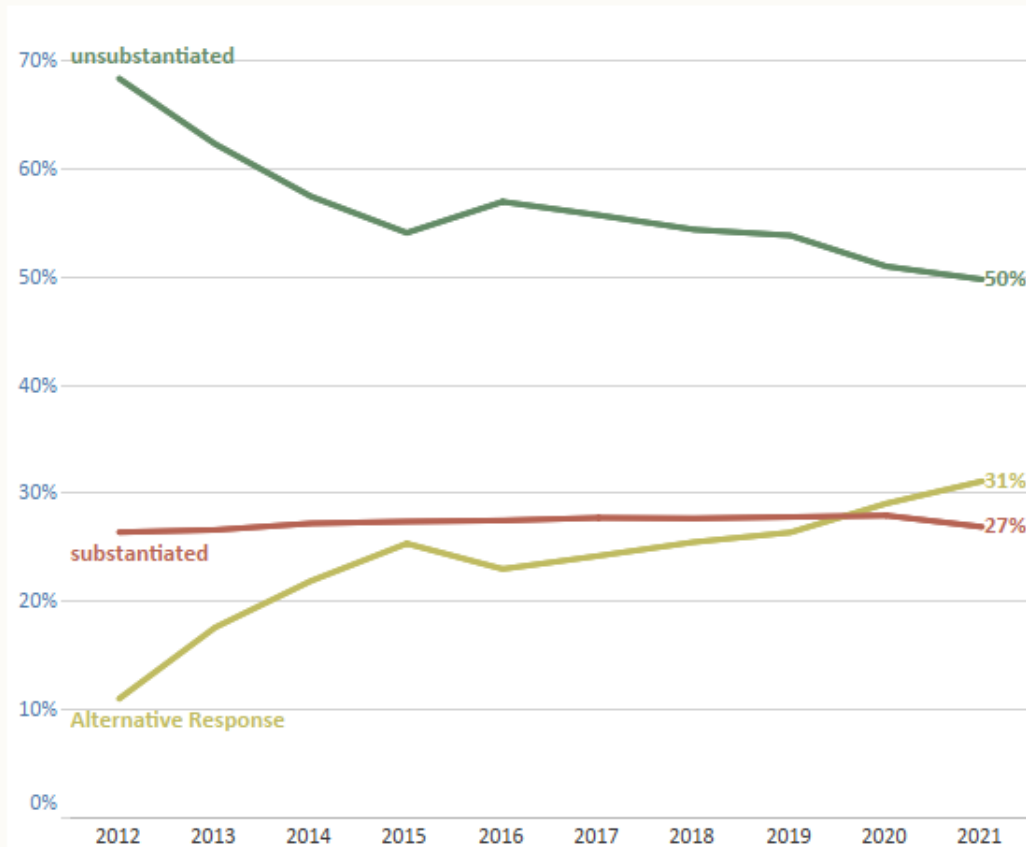
**Although 33 children out of 1,000 in the general population are investigated for abuse/neglect, over 80% are not substantiated. How does racial equity fare among report disposition?**

During federal fiscal year 2021, were there differences among reporters in whether an investigation was substantiated?

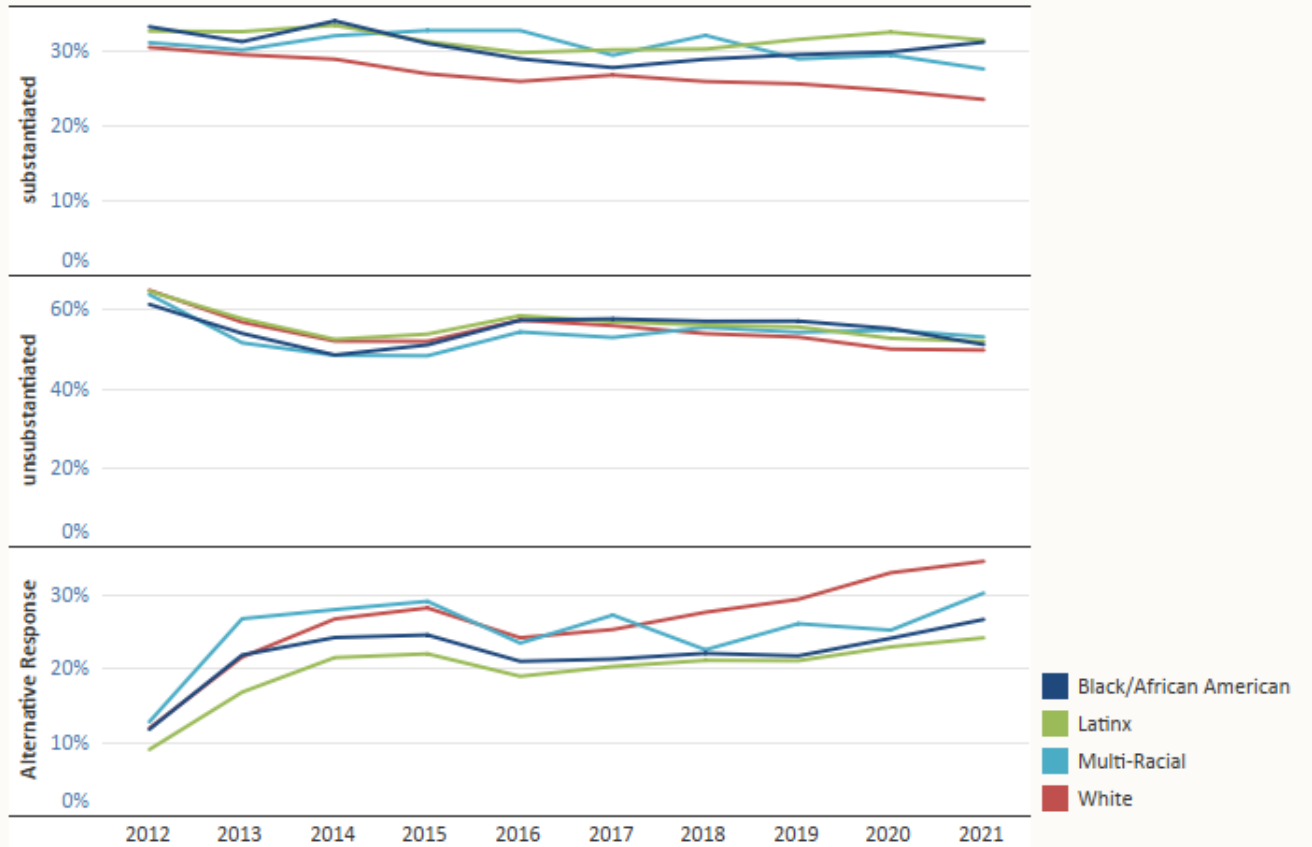
Are there factors that have lead to the increases in the percent of children reported by medical/mental health professionals?

Percent of children (ages < 18) screened in for an investigation during the federal fiscal year.  
(unique count of children < age 18; unknown/missing disposition not displayed)

Percent of children **by disposition**



Percent children **by race/ethnic group** (note: axis ranges vary across graphs)



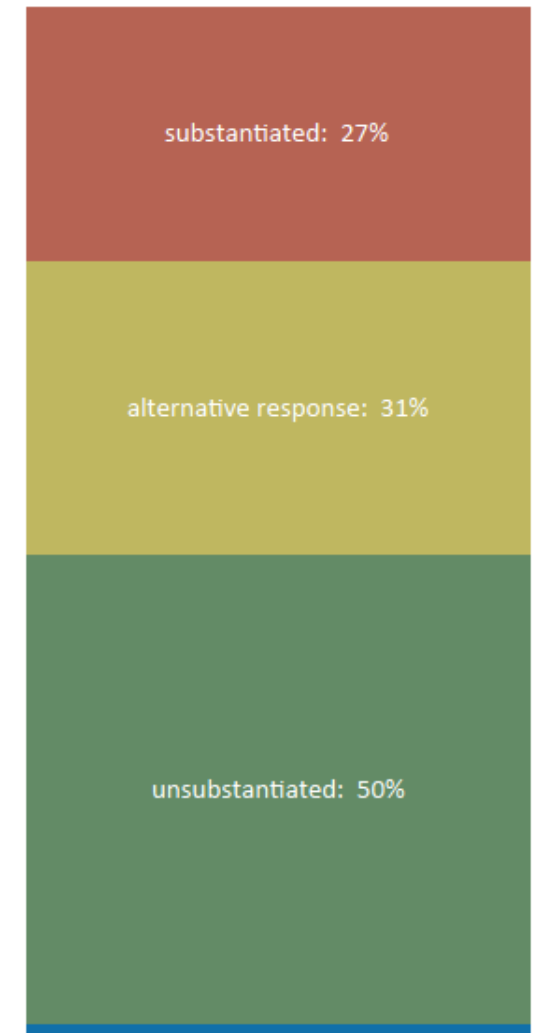
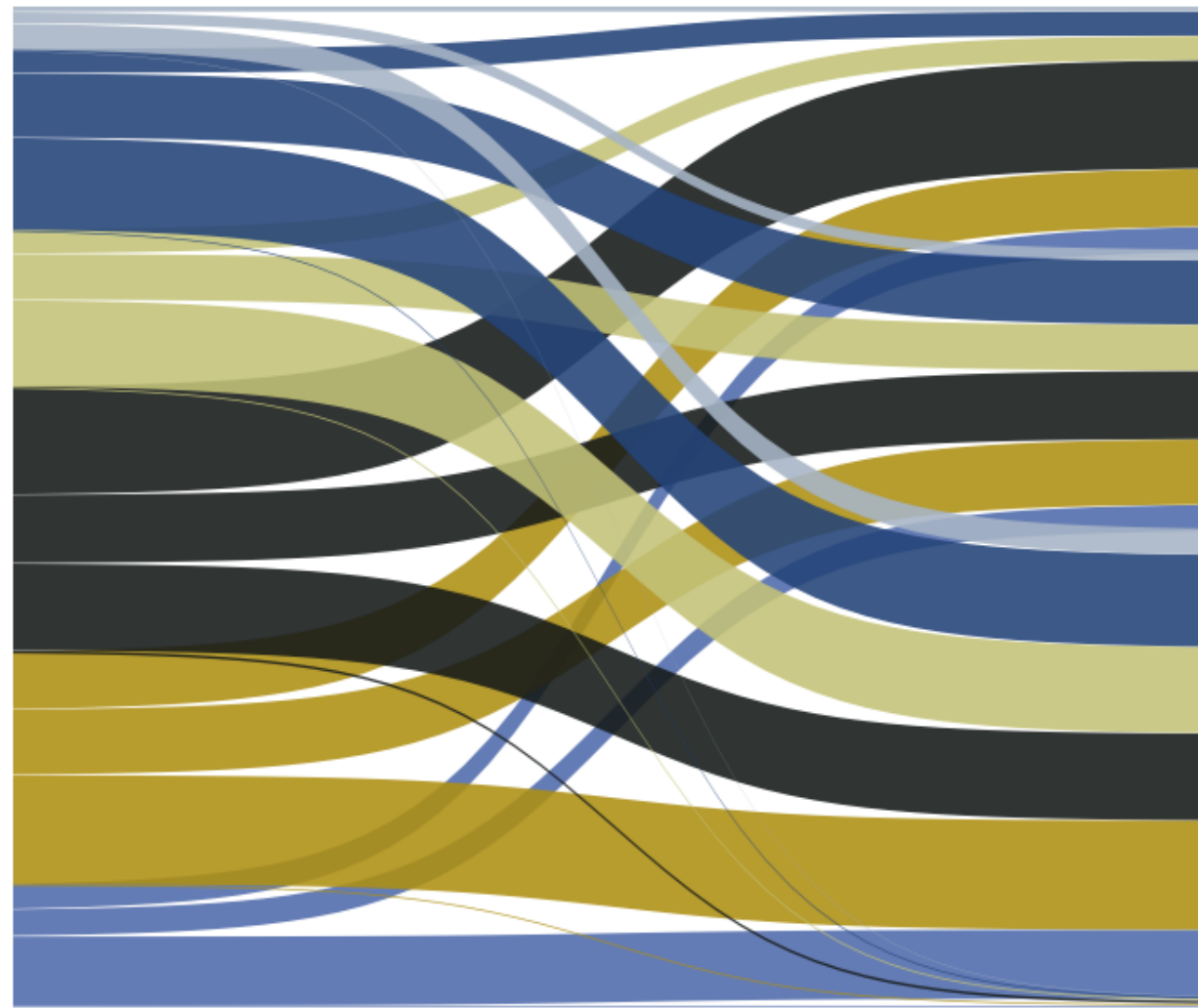
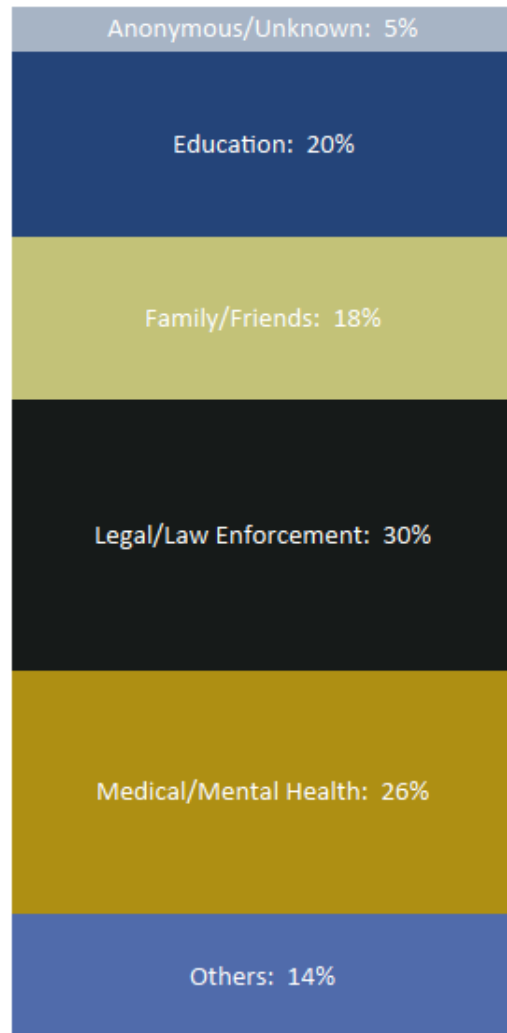
Children are surveilled by a variety of mandated and non mandated reporters.

Although 33 children out of 1,000 in the general population are investigated for abuse/neglect, over 80% are not substantiated. How does racial equity fare among report disposition?

During federal fiscal year 2021, were there differences among reporters in whether an investigation was substantiated?

Are there factors that have lead to the increases in the percent of children reported by medical/mental health professionals?

About 1 in 4 children reported by a medical/mental health provider result in a substantiation. Is there equ..





Although 33 children out of 1,000 in the general population are investigated for abuse/neglect, over 80% ..

During federal fiscal year 2021, were there differences among reporters in whether an investigation was substantiated?

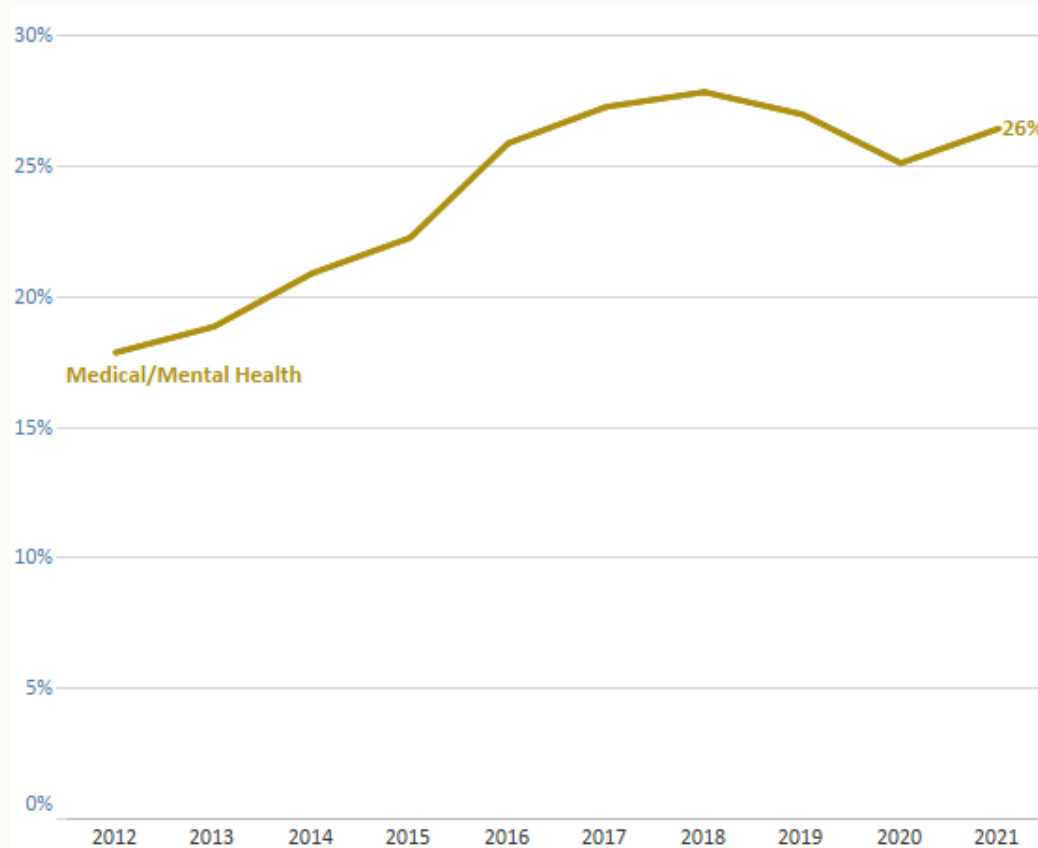
Are there factors that have led to the increases in the percent of children reported by medical/mental health professionals?

About 1 in 4 children reported by a medical/mental health provider result in a substantiation. Is there equity in dispositional outcomes?

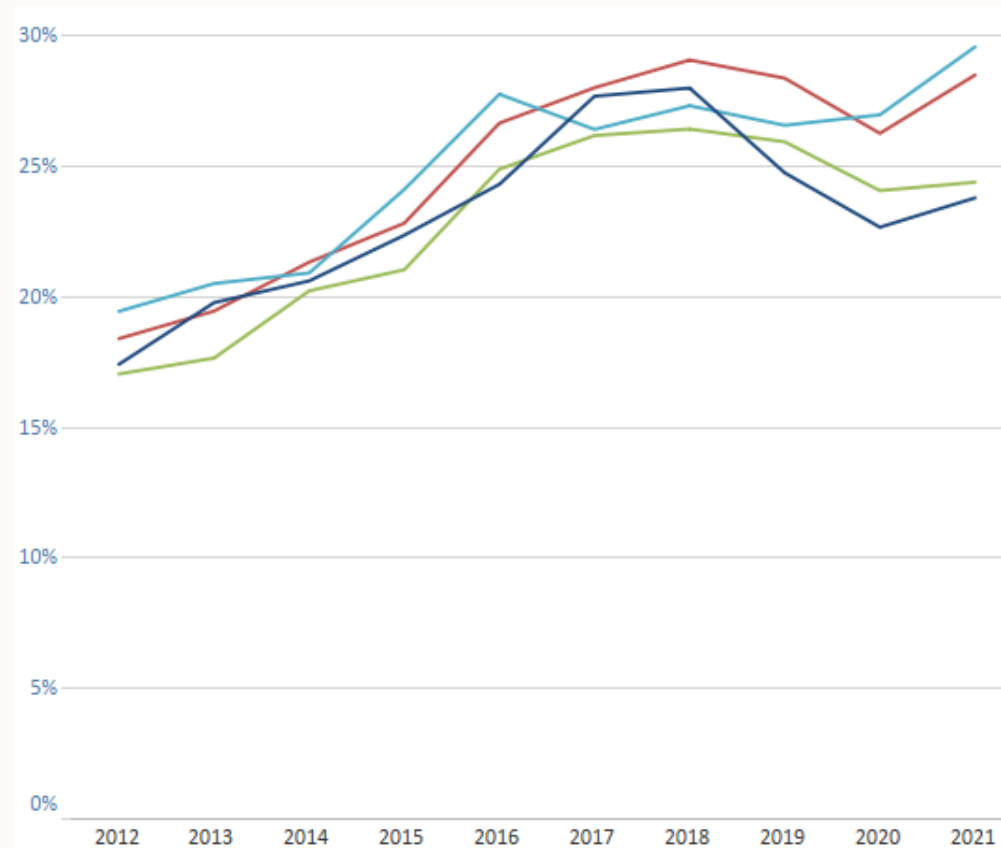
Are different types of child maltreatment allegations called in equitably among reporters?

Percent of all children (ages < 18) screened in for an investigation during the federal fiscal year reported by medical/mental health professionals. (unique count of children < age 18)

Percent of children screened by reporter source



Percent children by race/ethnic group



- Black/African American
- Latinx
- Multi-Racial
- White

During federal fiscal year 2021, were there differences among reporters in whether an investigation was substa..

Are there factors that have lead to the increases in the percent of children reported by medical/mental health professionals?

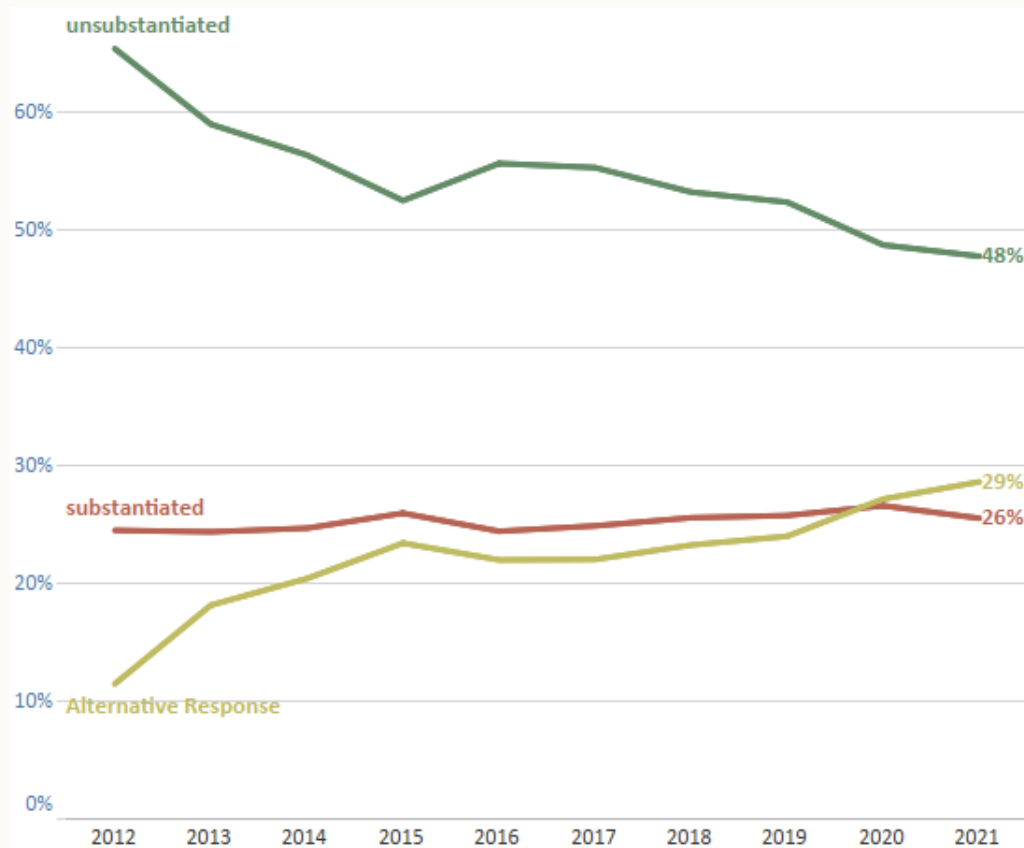
About 1 in 4 children reported by a medical/mental health provider result in a substantiation. Is there equity in dispositional outcomes?

Are different types of child maltreatment allegations called in equitably among reporters?

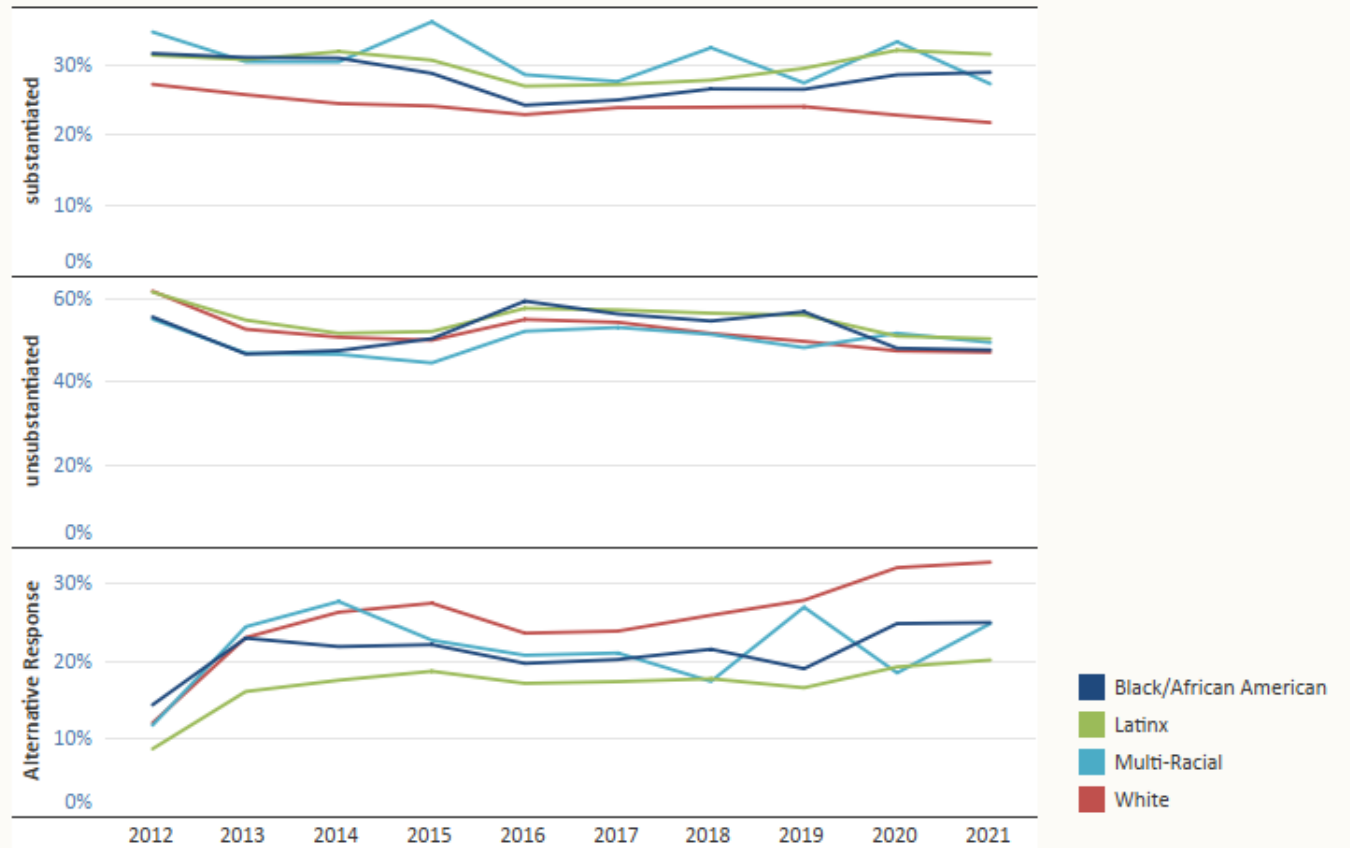
What might account for the types of maltreatment that medical/mental health professionals report?

Percent of children (ages < 18) reported by medical/mental health professionals screened in for an investigation during the federal fiscal year by disposition. (unique count of children < age 18; unknown/missing disposition not displayed)

Percent of children by disposition



Percent children by race/ethnic group (note: axis ranges vary across graphs)



Are there factors that have lead to the increases in the percent of children reported by medical/mental health pr..

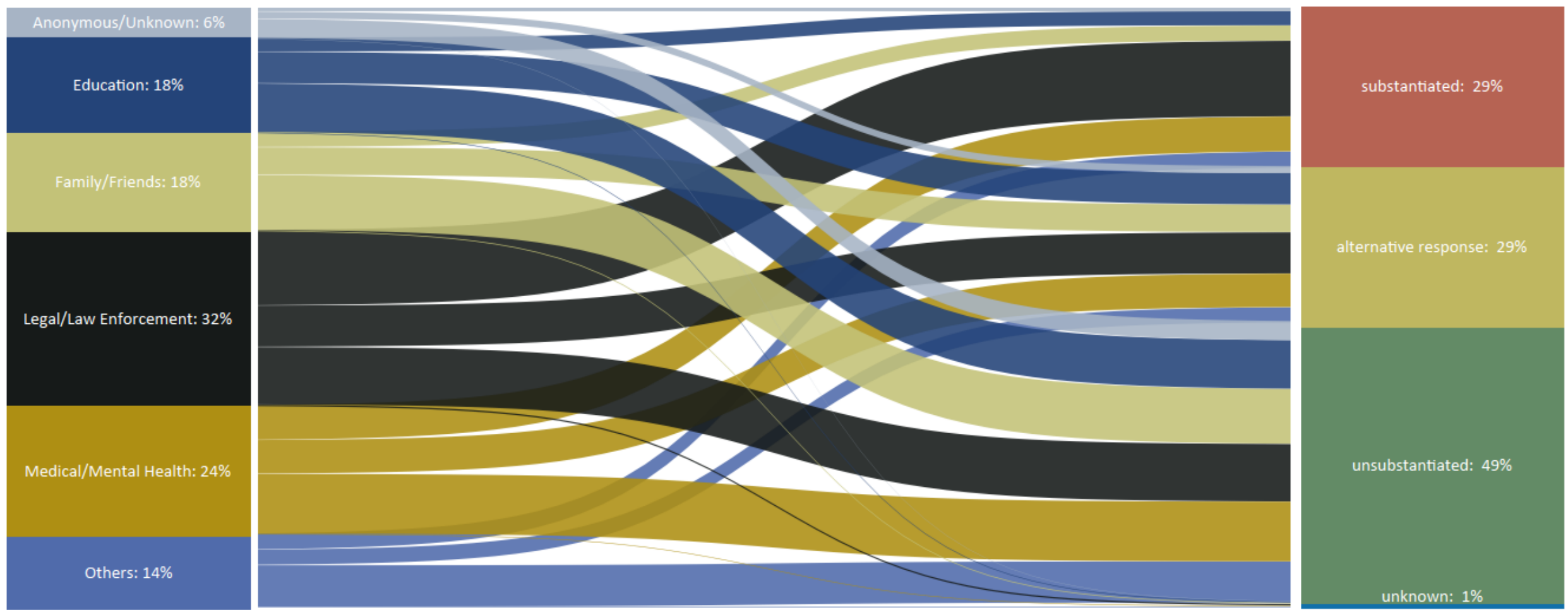
About 1 in 4 children reported by a medical/mental health provider result in a substantiation. Is there equity in dispositional outcomes?

Are different types of child maltreatment allegations called in equitably among reporters?

What might account for the types of maltreatment that medical/mental health professionals report?

Are medical/mental health professionals reporting the 'correct' children the child protection system?

Maltreatment Type  
Neglect



About 1 in 4 children reported by a medical/mental health provider result in a substantiation. Is there e..

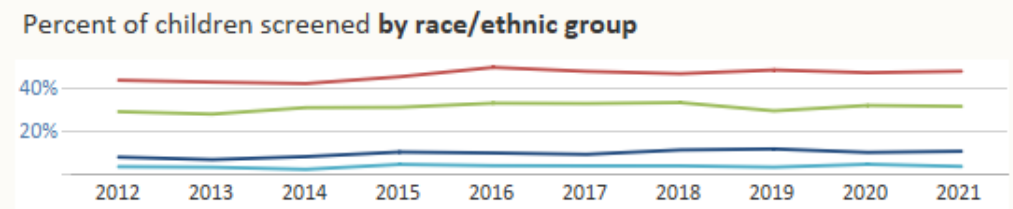
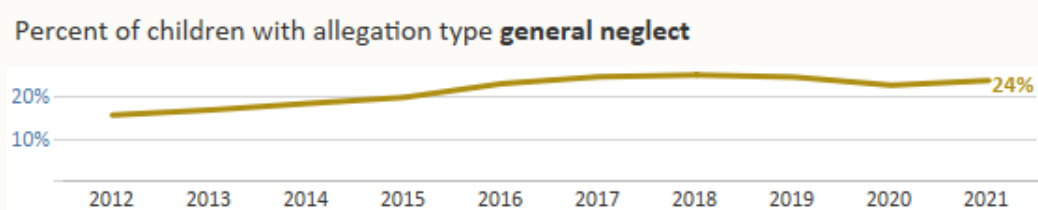
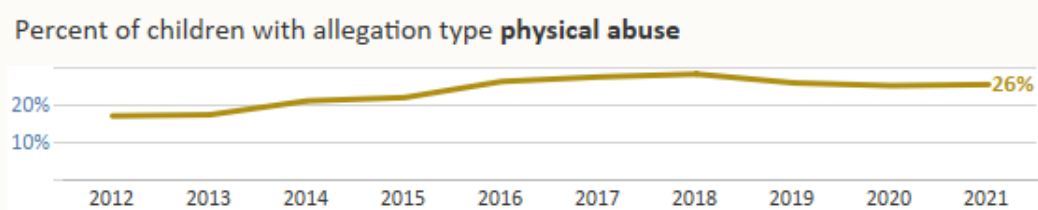
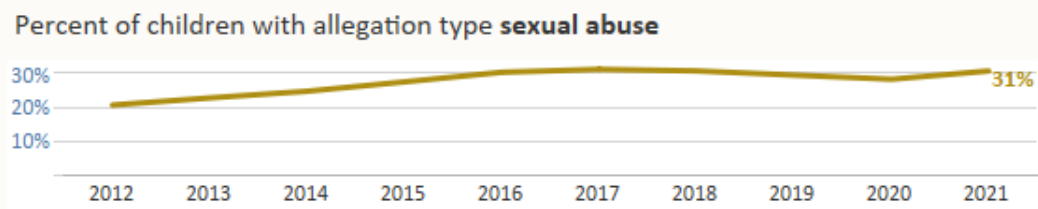
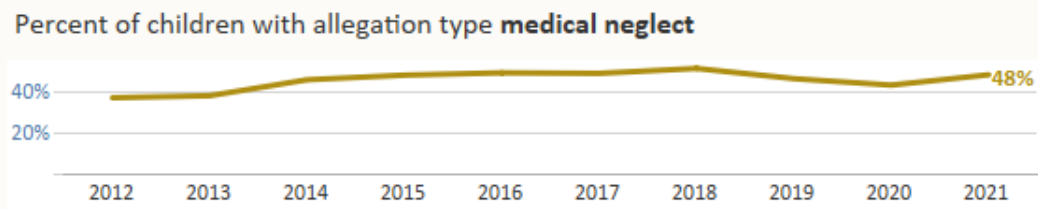
Are different types of child maltreatment allegations called in equitably among reporters?

What might account for the types of maltreatment that medical/mental health professionals report?

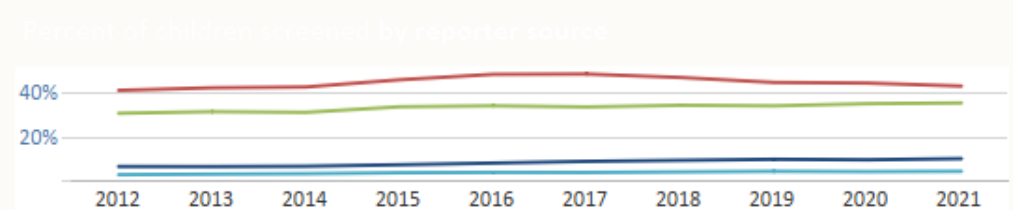
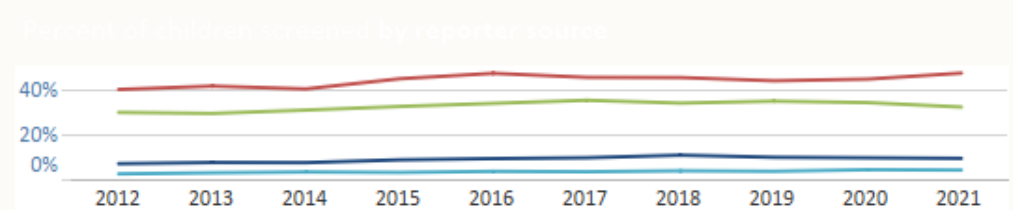
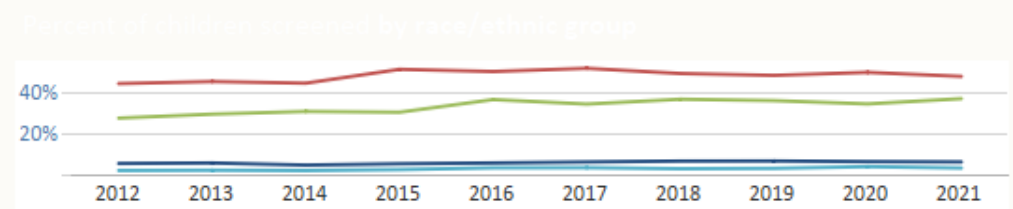
Are medical/mental health professionals reporting the 'correct' children the child protection system?

Thank you!

Percent of all children (ages < 18) screened in for an investigation during the federal fiscal year reported by medical/mental health professionals by allegation type. (unique count of children < age 18; only top 4 allegation types shown)



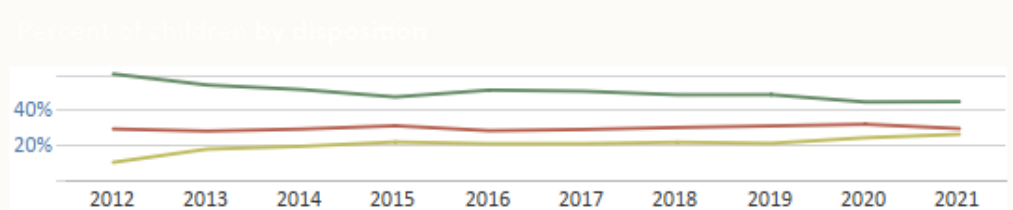
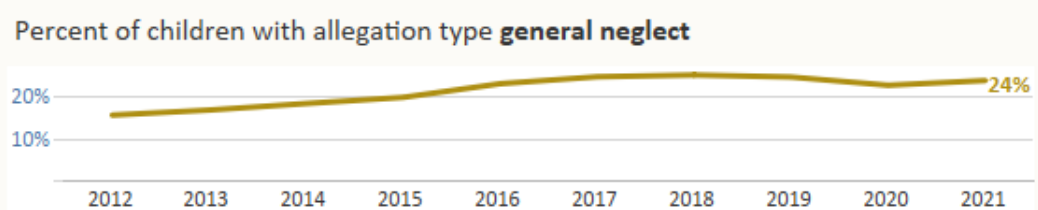
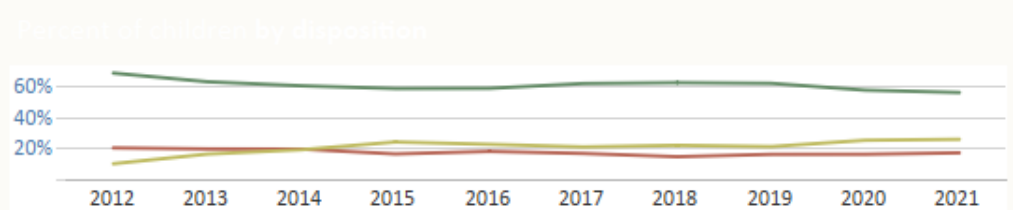
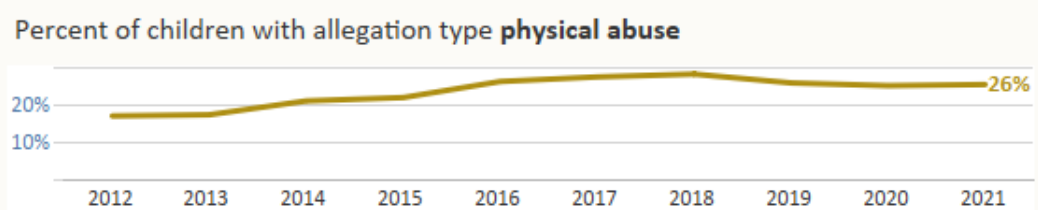
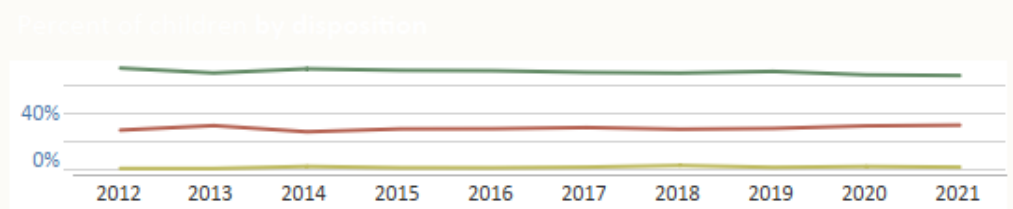
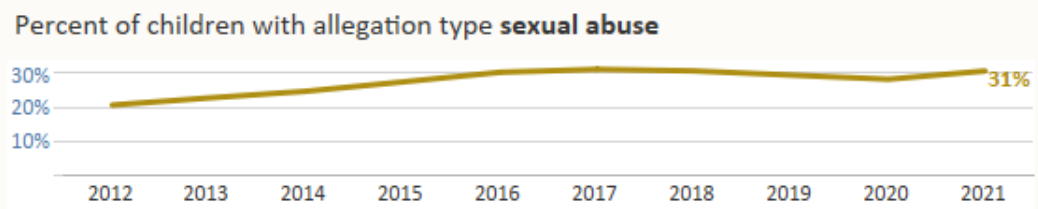
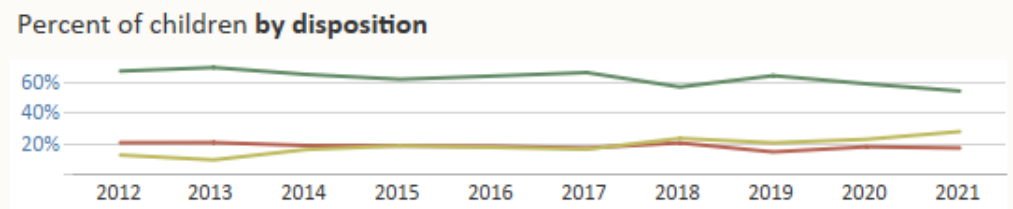
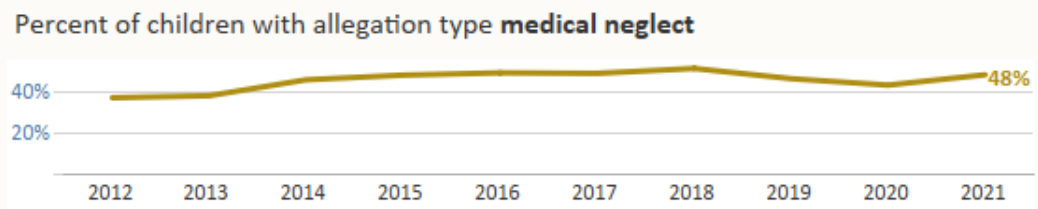
Recall general population  
 Black/African American = 5%  
 Latinx = 34%  
 Multi-Racial = 5%  
 White = 52%



Black/African American  
 Latinx  
 Multi-Racial  
 White

About 1 in 4 children reported by a me..	Are different types of child maltreatment allegations called in equitably among reporters?	What might account for the types of maltreatment that medical/mental health professionals report?	Are medical/mental health professionals reporting the 'correct' children the child protection system?	Thank you!
--	--	---	---	------------

Percent of all children (ages < 18) screened in for an investigation during the federal fiscal year **reported by medical/mental health professionals** by allegation and disposition types.  
 (unique count of children < age 18; only top 4 allegation types shown)



Medical/Mental Health Professionals report 24% of all the general neglect allegations but nearly half are unsubstantiated.

- unsubstantiated
- Alternative Response
- substantiated

About 1  
in 4  
children  
reported  
by a me..

Are different types of child maltreatment  
allegations called in equitably among  
reporters?

What might account for the types of  
maltreatment that medical/mental health  
professionals report?

Are medical/mental health professionals  
reporting the 'correct' children the child  
protection system?

**Thank you!**

Where do we go now?